

16S210

AIM-9 Missile Launcher

Rugged & versatile single rail launcher for AIM-9 Sidewinder family of missiles



The Marvin Group 

A tradition of excellence

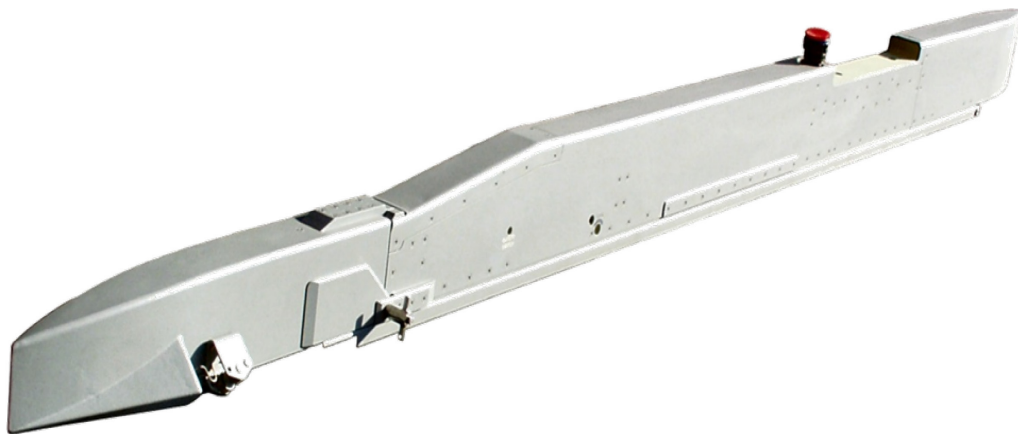
16S210

AIM-9 Missile Launcher



Marvin Engineering Co., Inc.

Rugged & versatile single rail launcher for AIM-9 Sidewinder family of missiles



Benefits

- Simple, proven single rail launcher for AIM-9
- Easy to install and load
- Basic modular design provides ease of maintenance
- Combat proven
- In production and exportable

Parameter	Details
Length	105.00 inches
Width	3.00 inches
Height	5.00 inches
Weight	66 lbs
Platform Integration	F-16



Features

- Rugged, versatile & reliable single rail launcher
- Compatible with of AIM-9 missiles
- Attaches directly to wingtip or under wing pylons with adaptors
- Self contained power supply converts analog to digital signals

Marvin Engineering Co., Inc.
261 West Beach Avenue
Inglewood, California 90302 USA
Tel +1 (310) 674-5030
Fax +1 (310) 673-9472

for additional info contact: sales@marvineng.com

The
Marvin Group

A tradition of excellence