

The
Marvin Group

LAU-151, 152

EXTERNAL ADVANCED RAIL LAUNCHER

For the F-35 Lightning II - Joint Strike Fighter



www.marvingroup.com

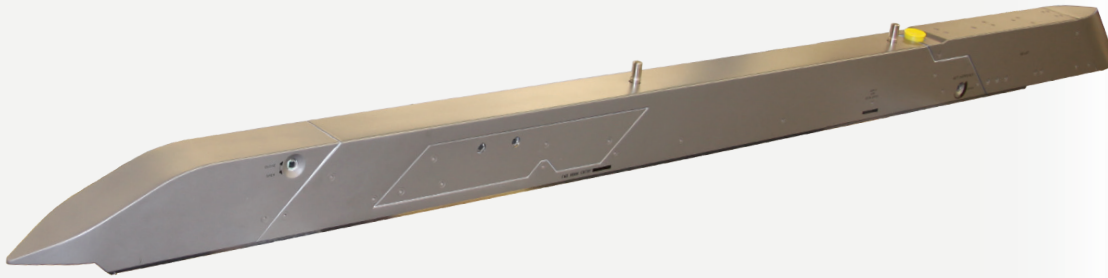
sales@marvineng.com

+1 310.674.5030

LAU-151, 152

EXTERNAL ADVANCED RAIL LAUNCHER

The LAU-151/A External Rail Launcher is integrated with all F-35 Lightning II models, enabling external carriage and release of a single AIM-9X or AIM-120 AMRAAM missile via either an external pylon station or an External Missile Adapter. The LAU-152/A is specifically designed for launching the AIM-132C (ASRAAM) and includes a Gas Generation System Mass Model (GGSM) to maintain mass and center of gravity characteristics, supporting launch of the AIM-132 Advanced Short Range Air-to-Air Missile (ASRAAM) for equipped operators.



BENEFITS

- **Enhanced Mission Flexibility:** LAU-151/A designed to launch the AIM-9X. LAU-152/A designed to launch the AIM-132C (ASRAAM).
- **Unmatched Reliability:** Proven performance ensures consistent and dependable operations in the most challenging environments.
- **Operational Versatility:** The LAU-151/A has a GGS Ballast in place of the functional GGS acting as a mass placeholder to ensure common weights and inertias across both launcher variants. The LAU-152/A is equipped with an internal Gas Generation System (GGS) to supply cooling gas to the seeker head of the ASRAAM so as to ensure the missile has full capability at all times.

PARAMETER

DETAILS

PARAMETER	DETAILS
LENGTH	115.00 inches
WIDTH	5.00 inches
WEIGHT	6.39 inches
WEIGHT	100.2 lbs
PLATFORM INTEGRATION	F-35A/B/C

FEATURES

- Integrated with all F-35 Lightning II models
- Include a Gas Generation System Mass Model (GGSM)
- GGSM preserves mass and center of gravity properties
- Designed to launch the AIM-132 (ASRAAM) missile
- Supports external carriage/release of a single AIM-9X



MARVIN ENGINEERING CO., INC.

261 West Beach Avenue, Inglewood, California 90302 USA

T: +1 310.671.5030 • F: +1 310.673.9472 • sales@marvineng.com

