

The
Marvin Group

KINETIC EFFECTS MARITIME SOLUTION

PEDESTAL-MOUNTED KINETIC PACKAGE

Scalable, Configurable, Rapidly Deployable,
and Modular Pedestal Mount Options



www.marvingroup.com

sales@marvineng.com

+1 310.674.5030

MISSION PACKAGES

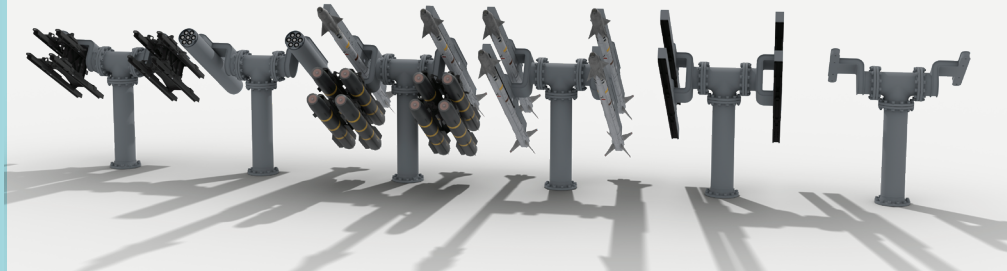
Scalable, configurable, rapidly deployable, and modular solutions tailored to platform and mission requirements. Capable of supporting multiple launcher types and multi-rail/effector configurations with localized launch control electronics and optional combat-proven fire control solution.

Based upon operational requirements and SWaP analysis, multiple rails/launchers can be integrated on a single pedestal, or multiple pedestals, fixed or with options for traverse and elevation, with future iterations capable of integration with Remote Weapons Stations (RWS), or in containerized or palletized form. Localized Launch Control Unit electronics enable communication between the effectors and platform and for applications requiring this, a full-featured Fire Control Solution, customer provided or otherwise, can be integrated.

BENEFITS

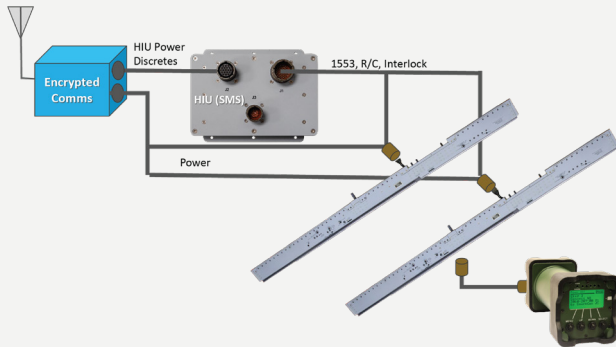
- Scalable
- Configurable
- Rapidly Deployable
- Modular
- AAW, SSW, ASuW Options Available
- Lightweight Footprint
- USV/UGV Integration
- Retrofit Possible on Legacy Vehicles

PEDESTAL MOUNT OPTIONS



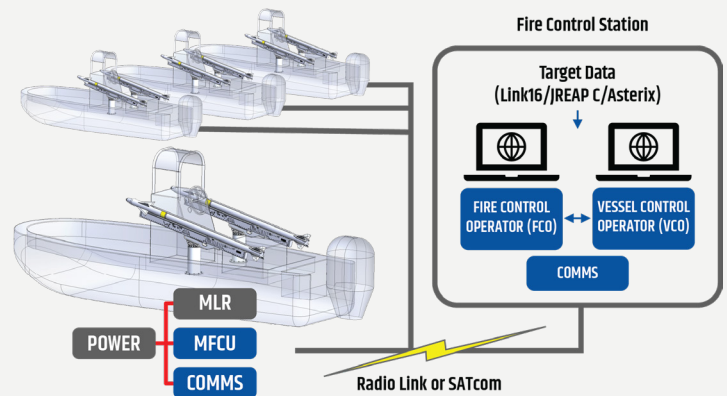
LAUNCH CONTROL UNIT

Localized and ruggedized electronics are packaged with launcher(s) and mounting interface(s) to enable communications with either an onboard or offboard Fire Control System to power the armament package and enable integrated effectors to receive authorized consent for release.



FIRE CONTROL SOLUTION

In partnership with a third-party, a full-fledged, combat-proven FCS can be integrated either onboard or offboard the firing platform to enable the full targeting cycle of Find, Fix, Track, Target, Engage, and Assess.



CURRENT SUPPORTED EFFECTORS



MARVIN ENGINEERING CO., INC.

261 West Beach Avenue, Inglewood, California 90302 USA

T: +1 310.671.5030 • F: +1 310.673.9472 • sales@marvineng.com

